

SPECIFICATIONS

FREQUENCY BAND : 10.70 - 12.75 GHz
 INSERTION LOSS : 0.30 dB AT 10.70 TO 12.20 GHz
 : 0.45 dB MAX AT 12.20 TO 12.75 GHz
 VSWR : 1.20:1 MAX
 ISOLATION : 85 dB MIN AT 13.70 TO 14.50 GHz

PRESSUARIZATION: SEALED TO 5 PSIG

FINISH:

FLANGE FACES: CHEMFILMED PER MIL-DTL-5541
 TYPE II CLASS 1A

EXTERIOR: * WHITE PAINT, COLOR # 17875 PER
 FED-STD-595.

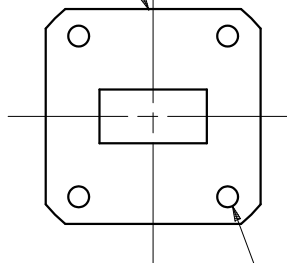
REVISIONS

REV	DESCRIPTION	DATE	APPROVED
A	REVISED PER DR 12251		

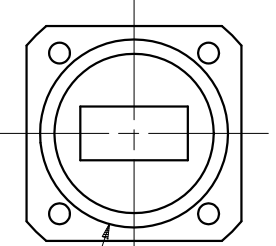
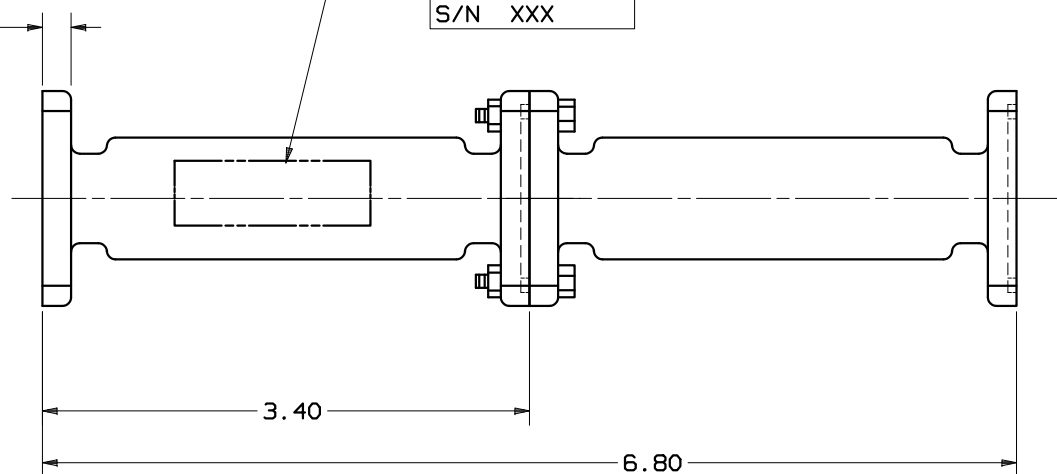
GD SATCOM
 50478 XX-XX
 P/N 109058-17
 S/N XXX

WR75 FLANGE
 INTERFACE
 BOTH ENDS

.20 MIN.
 BOTH
 ENDS



4X Ø.144 THRU
 Ø.147
 BOTH ENDS



O-RING GROOVE
 Ø 1.31 O.D. X
 Ø 1.11 I.D. X
 .050 DP.

UNLESS OTHERWISE SPECIFIED		SIGNATURES	DATE	GENERAL DYNAMICS PROPRIETARY			
DIMENSIONS ARE IN INCHES		DRAWN: A. BACA	24SEP12	GENERAL DYNAMICS SATCOM Technologies 3111 Fujita St., Torrance, CA 90505, (310) 539-6704			
TOLERANCES-		CHECKED:					
SURFACE .XX ±.03		ENGRS:					
.XXX ±.003		MFG:		KU-BAND FILTER Tx REJECT			
63 ✓ ANGLES±		EAR CONTROLLED:					
MATERIAL AL ALY A356		Export or re-export subject to 15 CFR 700-799.					
FINISH				SIZE C	FSCM NO. 50478	DWG NO. 109058-17	REV A
				SCALE: 1:1	SHEET 1		