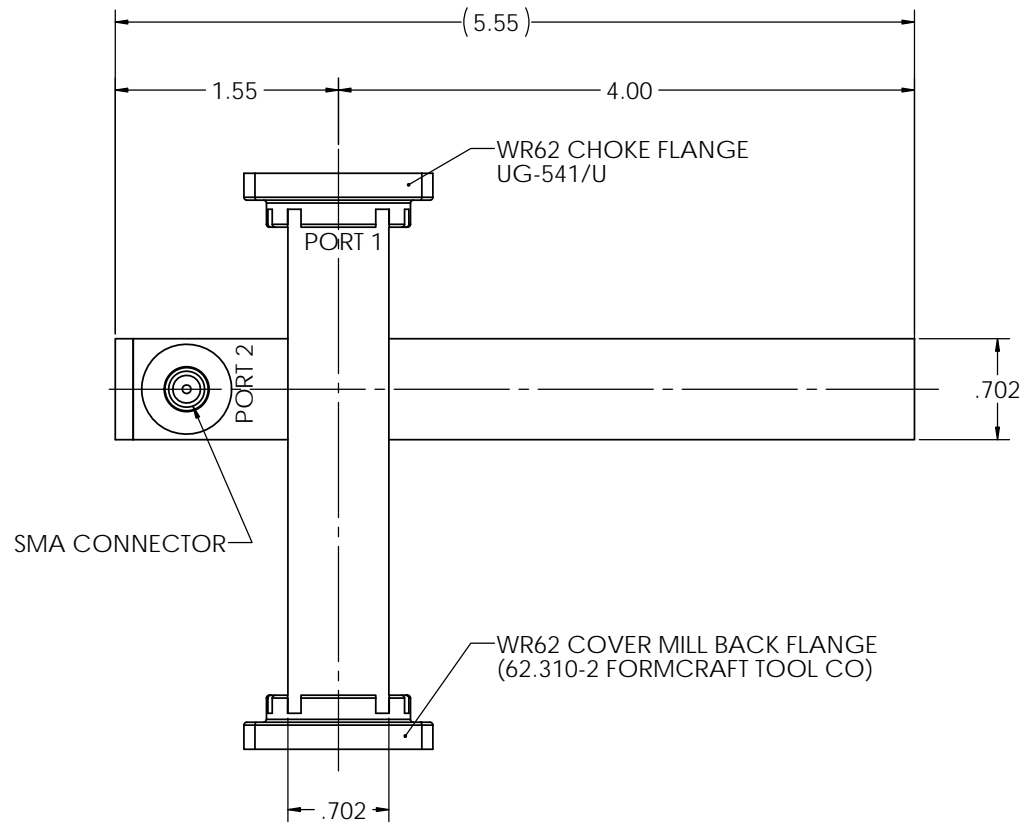
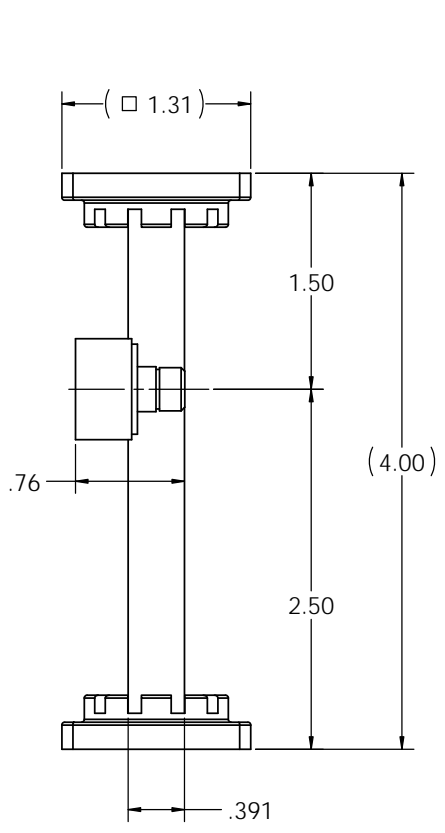


COUPLER REQUIREMENTS	
FREQUENCY	16.4 - 16.6 Ghz
COUPLING	PORT 1 - PORT 2 60 dB ± 3 dB
PEAK POWER AT PORT 1	150 KW (150 W AVG)

MECHANICAL SPECIFICATIONS	
PRESSURE	30 PSIG
FINISH: FLANGE FACES	ZINC NICKEL PLATED PER AMS 2417G TYPE II, CLASS 2
EXTERIOR	BLACK PAINT
MARKING	RUBBER STAMP

REVISIONS			
REV	DESCRIPTION	DATE	APPROVED
C	REVISED PER DR 11980		



UNLESS OTHERWISE SPECIFIED INTERPRET DIMENSIONING & TOLERANCING PER ANSI Y14.5M-1992. DIMENSIONS ARE IN INCHES. DIMENSIONS SHOWN IN () ARE FOR REFERENCE ONLY. TOLERANCES ARE: SURFACE- TOLERANCES- 32 XX ±.02 XXX ±.002 ✓ MATERIAL:	APPROVALS	DATE
	DRAWN:	
	CHECKED: J.KERPAN	10-26-09
	ENGR:	
	MFG:	
	QA:	
	EAR CONTROLLED:	
	Export or re-export subject to 15 CFR 700 - 799	

GENERAL DYNAMICS PROPRIETARY			
GENERAL DYNAMICS			
SATCOM Technologies			
3111 Fujita Street, Torrance CA 90505, (310) 539-6704			
OUTLINE COUPLER			
MODEL: WC6260			
SIZE	FSCM No.	DWG No.	REV
C	50478	103830-1	C
SCALE:	NONE		SHEET 1 OF 1

NOTES: UNLESS OTHERWISE SPECIFIED.