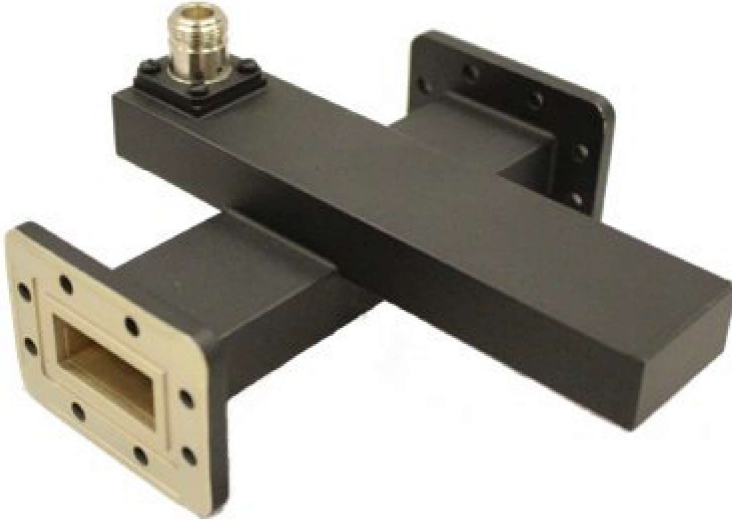


Crossguide Couplers



Crossguide Couplers Description

- Frequency 1.7 - 18 GHz
- 1.15 Typical VSWR
- SMA & Type N (Male or Female) Connectors Available
- Mid-Band Nominal Coupling Values of 20-50 are standard.
- Standard Material Copper (OFHC) or Aluminum (6061) Waveguide
- 10-20DB of Directivity is Typical

WAVEGUIDE FLANGES:

A = AMC QUICK DISCONNECT (MALE) PATENT PROTECTED

B = AMC QUICK DISCONNECT (FEMALE) PATENT PROTECTED

C = MODIFIED CPR STYLE - GROOVE ONLY, NO CONTACTS (CLEAR HOLES)

D = MODIFIED CPR STYLE - GROOVE ONLY, NO CONTACTS (ALL TAP HOLES)

E = CPR STYLE FLAT (ALL TAP HOLES)

F = CPR STYLE FLAT (CLEAR HOLES)

G = CPR STYLE CONTACT GROOVED (CLEAR HOLES)

H = CPR STYLE CONTACT GROOVED (ALL TAP HOLES)

I = CMR (CLEAR HOLES)

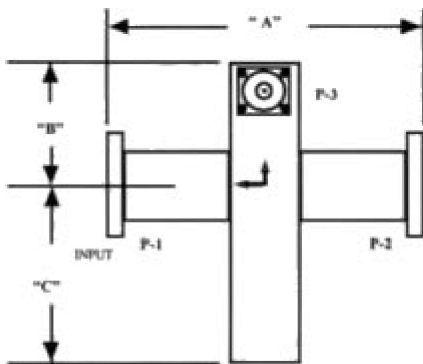
J = CMR (ALT/ TAP,/CLEAR HOLES)

K = CMR (ALL TAP HOLES)

L = UG COVER (CLEAR HOLES)
M = UG COVER (ALL TAP HOLES)
N = UG COVER GROOVED (ALL CLEAR HOLES)
O = UG CHOKE (CLEAR HOLES)
P = UG CHOKE (ALL TAP HOLES)
Q = UG COVER GROOVED (ALL TAP HOLES)
R = UBR
S = PBR
T = CBR
U = UDR
V = PDR
W = CDR
X = SPECIAL FLANGES (CUSTOMER TO SPECIFY)

AMC P-3 Type Codes:

N = Type N Coax. Conn. - Female
NM = Type N Coax, Conn. - Male
S = Type SMA Coax. Conn.- Female
SM = Type SMA Coax. Conn. - Male
Note: Female Type N (N) and SMA (S) connectors are standard



WR SIZE	FREQ: GHZ	DIM. A	DIM. B	DIM. C
42	18.0 - 23.0	3.00	1.25	1.99
62	12.4 - 18.0	3.5	1.75	2.37
75	10.0 - 15.0	3.75	1.87	2.5

90	8.20 - 12.4	4	2	2.75
112	7.05 - 10.0	4.2	2.1	3
137	5.85 - 8.20	6	2.47	4
159	4.90 - 7.05	4	2.30	3.20
187	3.95 - 5.85	6.5	3.25	4.5
229	3.30 - 4.90	7	3.5	4.75
284	2.60 - 3.95	7.5	3.75	9.25
430	1.7 - 2.6	9	6.13	9.25

- Specify Operating Frequency.
- Return Loss (Main Arm) > 26dB.
- Return Loss (2nd Arms) > 19dB.
- Specify coupling direction (forward or reverse).
- Specify if pressurization is required.

Note: All CGC models are made of Brass or Aluminum and include an iridite/ corrosion protection treatment. Flanges are unplated, iridited and polished. Finish is flat black. For other plating finishes, materials, or paint color requirements, please specify

SAMPLE P/N: AMC-CGC75-P/L-N-40B

MODEL	WAVEGUIDE	FLANGE TYPE	CONNECTOR	COUPLING	Material
NUMBER	SIZE	P1 + P2	P3	VALVE DB	A = Alum. B = Brass
AMC-CGC	75	P/L	N	40	B

The above part number describes the following: WR 75 crossguide coupler, with CHOKE FLANGE/COVER FLANGE on primary arm and a type "N" coax connection. The connector is on the secondary axis arm. The coupling value is 40dB. The last letter 'B' reflects the material Copper/Brass the other option is 'A' for Aluminum.