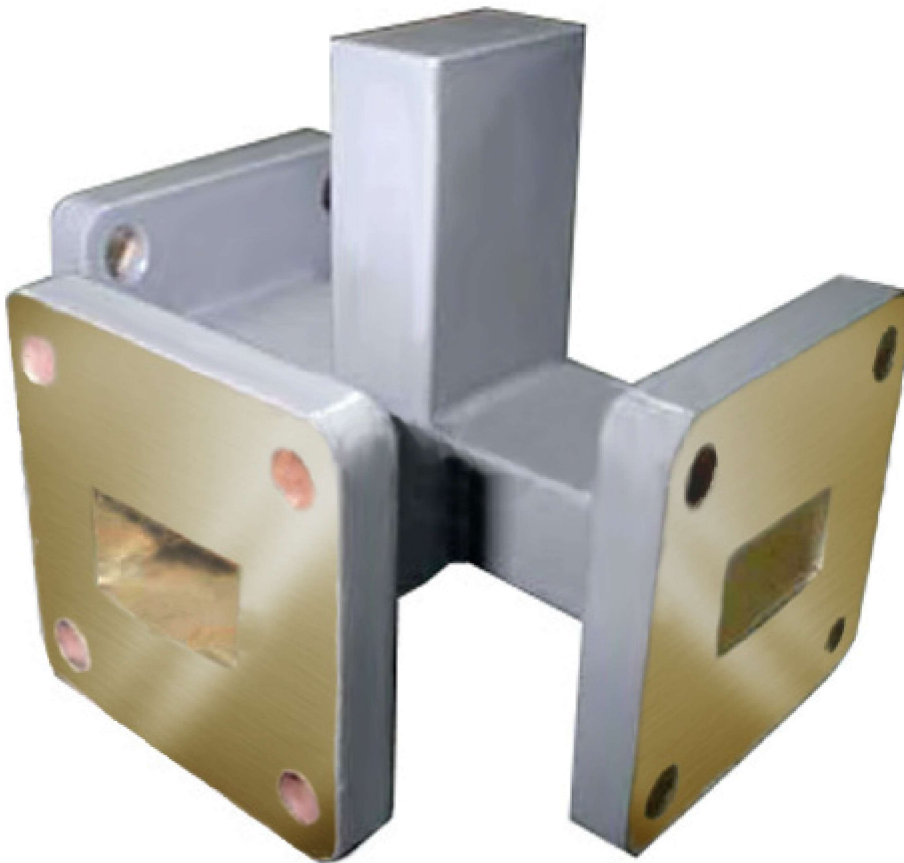
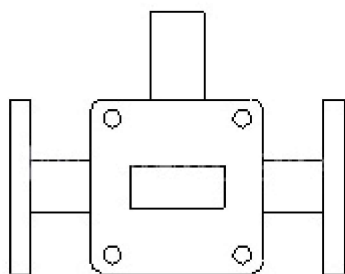


High-Power Variable Waveguide Combiner / Divider We offer power dividers that are highly reliable with high performance. Feature : -Gc
High power capacity Application : Phased array radar, missile guidance antenna and power synthesis system Other Technical Specification
(dB) >35 Distribution ratio (dB) 3 ± 0.25 Band with (dB) 10%~20%Me
Specifications Material Al/Cu Environmental Specifications Operatin
-55~+8



Outline Drawing :



Model List :

Waveguide			Frequency Range (GHz)	Bandwidth	Isolation (dB)	Distribution ratio (dB)	Material
E.I.A.	IEC	UK					
WR2300	NONE	R3	0.32-0.49	10%~20%	>35	3±0.25	Al
WR2100	NONE	R4	0.35-0.53	10%~20%	>35	3±0.25	Al
WR1800	WG1	R5	0.41-0.62	10%~20%	>35	3±0.25	Al
WR1500	WG2	R6	0.49-0.75	10%~20%	>35	3±0.25	Al
WR1150	WG3	R8	0.64-0.98	10%~20%	>35	3±0.25	Al
WR975	WG4	R9	0.75-1.15	10%~20%	>35	3±0.25	Al
WR770	WG5	R12	0.96-1.46	10%~20%	>35	3±0.25	Al
WR650	WG6	R14	1.13-1.73	10%~20%	>35	3±0.25	Al
WR510	WG7	R18	1.45-2.20	10%~20%	>35	3±0.25	Al
WR430	WG8	R22	1.72-2.61	10%~20%	>35	3±0.4	Al/Cu
WR340	WG9A	R26	2.17-3.30	10%~20%	>35	3±0.4	Al/Cu
WR284	WG10	R32	2.60-3.95	10%~20%	>35	3±0.4	Al/Cu
WR229	WG11	R40	3.22-4.90	10%~20%	>35	3±0.4	Al/Cu
WR187	WG12	R48	3.94-5.99	10%~20%	>35	3±0.4	Al/Cu
WR159	WG13	R58	4.64-7.05	10%~20%	>35	3±0.4	Al/Cu
WR137	WG14	R70	5.38-8.17	10%~20%	>35	3±0.4	Al/Cu
WR112	WG15	R84	6.57-9.99	10%~20%	>35	3±0.4	Al/Cu
WR90	WG16	R100	8.20-12.4	10%~20%	>35	3±0.4	Al/Cu
WR75	WG17	R120	9.84-15.0	10%~20%	>35	3±0.4	Al/Cu
WR62	WG18	R140	11.9-18.0	10%~20%	>35	3±0.4	Al/Cu
WR51	WG19	R180	14.5-22.0	10%~20%	>35	3±0.4	Al/Cu
WR42	WG20	R220	17.6-26.7	10%~20%	>30	3±0.4	Al/Cu
WR34	WG21	R260	21.7-33.0	10%~20%	>30	3±0.4	Al/Cu
WR28	WG22	R320	26.5-40.0	10%~20%	>30	3±0.4	Al/Cu
WR22	WG23	R400	32.9-50.1	10%~20%	>30	3±0.5	Cu
WR19	WG24	R500	39.2-59.6	10%~20%	>30	3±0.5	Cu
WR15	WG25	R620	49.8-75.8	10%~20%	>30	3±0.5	Cu
WR12	WG26	R740	60.5-91.9	10%~20%	>30	3±0.5	Cu
WR10	WG27	R900	73.8-112	10%~20%	>30	3±0.5	Cu

Test curve :

Note :

You could choose Flange type



SatelliteDish.com ®

(954) 941-8883